

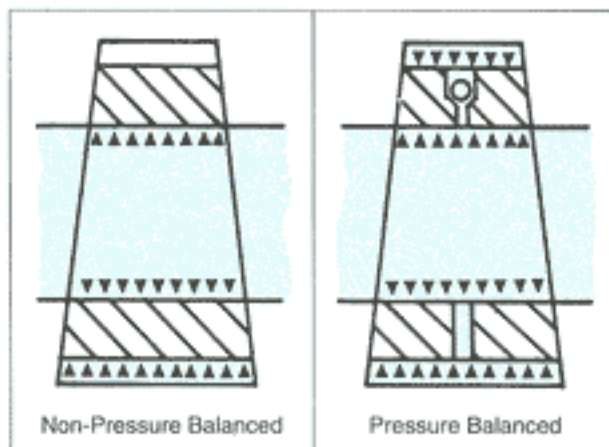
SUPER-H

Class 800
Regular Pattern

AUDCO SUPER-H Pressure Balanced Plug Valves have been developed to reduce the operating torque in plug valves without compromising on the in-line maintenance capability. The plug and body seating surfaces, which are lapped and matched, are not exposed to the line fluid while valves are in open condition; this confines corrosion and erosion to less critical areas. Sealing is further enhanced by specially developed plug sealants charged evenly around the seating surfaces. The plug is impregnated with PTFE based anti-friction agent - 'SUPER LoMu' - which provides greater wear resistance and ensures consistent operating torque.

PRESSURE BALANCED PLUG

In a standard taper plug valve, the line fluid finds its way into the large end chamber of the plug. The resultant force pushes the plug into its taper seat causing taper locking and possibly valve seizure. This resultant force persists when the subsequent line pressure remains high or is reduced. To unseat the taper locking and keep the valve operational, frequent sealant injection is required. In pressure balanced plug valve pressure balancing is achieved by providing two holes in the plug connecting the chambers at each end of the plug. The chambers, one fitted with a non-return valve acts as a balancing mechanism for the plug. The pressure in the large end chamber always equals line pressure and the pressure



in the small end chamber is always equal to or greater than the line pressure, minimising the resultant force. Pressure balancing eliminates out of balance forces and consequent taper locking. The Figure shows clearly how a balanced position is reached when line pressure is allowed to equalise the pressure acting on each end of the plug.

SUPER LoMu

Plug and Stem of Super-H Pressure Balanced plug valves are treated with an antifriction agent based on-PTFE which we call as "Super LoMu". This provides greater wear resistance and ensures low consistent operating torque.

FIRE SAFE

Super-H Pressure Balanced Plug valves of class 800 are intrinsically fire safe by design. The features incorporated in the valve make the valves seal and operate effectively even after being subjected to fire of varying temperatures and duration resembling fire accidents.

STANDARDS

Valve Design	BS 5353
End to End dimensions	ASME/ANSI B16.10 and BS 2080
Socketweld ends	ASME/ANSI B16.11
Inspection & Testing	BS 6755 Part I

OPERATION AND MAINTENANCE

Super-H Pressure Balanced Plug valves generally need very little attention on installation. However, for trouble free operation sealant injection as recommended is to be carried out. Please refer to "Installation, Operation & Maintenance Manual of Super-H Pressure Balanced Plug valves" for details.

As a standard, Super-H Pressure Balanced Plug valves are supplied with AUDCO 733 Plug Sealant suitable for most hydrocarbon services in a temperature range of -40 to 480° F. On request, plug sealant from a wide range offered, can be supplied to suit the nature of service. It is recommended that you consult us before selecting the plug sealant for a new service.

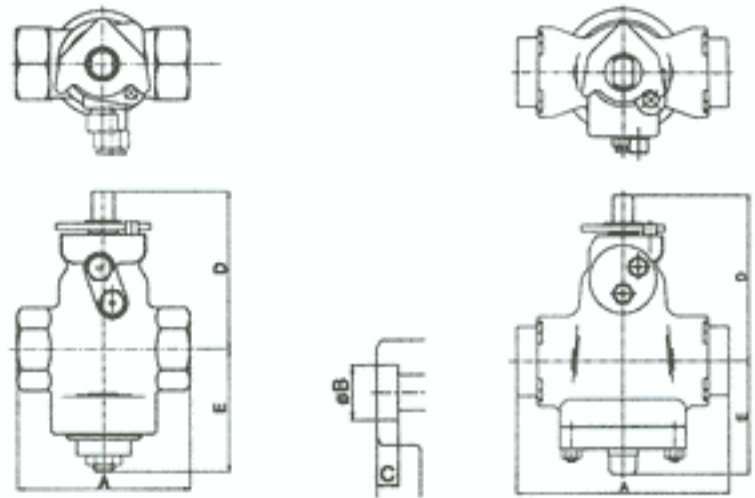


MATERIAL SPECIFICATION

Name of part	Specification
Body	ASTM A 105 ASTM A 216 Gr.WCB for 40mm
Plug	BS 970 080M15
Bung/cover	BS 970 070M20 ASTM A 216 Gr.WCB for 40mm
Packing	Graphite

TEST PRESSURE

	Max. CWP at -20 to 100°F		Hydrostatic			
			Shell		Seat	
	psig	bar	psig	bar	psig	bar
Cl. 800	1975	136	3000	207	2175	150



1/2" to 1"

Socket weld ends

1 1/2"

For ease of adjustment, it is desirable that 6" (150mm) clearance be maintained around the pressure screw, located at the bottom of the valve.

DIMENSIONS (mm)

Size		Pattern	A	B	C	D	E	Wrench No.	Wrench Length
Inch	mm								
1/2	15	R	89	21.97 21.71	10	104	76	B8	230
3/4	20	R	133	27.31 27.05	13	127	97	B9	318
1	25	R	133	33.78 33.05	13	127	97	B9	318
1.1/2	40	R	228	48.65 48.90	13	180	120	B5S	685

Valves with welded on flanges can be offered but with a face to face dimension matching Cl. 1500 rating.

CATALOGUE NUMBER

A familiarity with our catalogue number is not necessary when specifying or ordering our valves. If full description of the valve could be provided we will translate this into a catalogue number formulated as per the following system.

15	H	R	W	899	C	C		
Size	Super-H	Pattern	Operation	1st digit Press. Rating	2nd & 3rd Digit End Connection each ends	Body Material	Plug Material	Options
15 mm		R - Regular	W - Wrench A - Actuator	8 - Class 800	9 - Socketweld	C - Carbon Steel	C - Carbon Steel E - Electroless Nickel Plated	Nil - Standard N - NACE

As we continuously endeavour to improve our products, the data given herein are subject to change.



Manufactured by
AUDCO INDIA LIMITED
Post Bag 976, Chennai 600 089
Phone : 234 2323 Fax : + 91 (44) 232 5055



Marketed by

LARSEN & TOUBRO LIMITED

(Industrial Valves Section)

P.O. Box 619, Calcutta 700 071 - Ph : 2822301 - Fax : 033-2821025
Post Bag 5247, Chennai 600 002 - Ph : 8522141 - Fax : 44-8520769
P.O. Box 6223, New Delhi 110 015 - Ph : 5931302 - Fax : 11-5438624
P.O. Box 119, Pune 411 001 - Ph : 624447 - Fax : 212-624910
P.O. Box 8119, Mumbai 400 051 - Ph : 6401232 - Fax : 22-6401312
Baroda 390 015 - Ph : 334799 - Fax : 0265-336184