

AUDCO Plug Valves

Cast Iron

Short Pattern - Standard Type

AUDCO Lubricated Taper Plug Valve has been successfully used in a variety of services because of its unique in line maintenance capability. The Plug and Body seating surfaces, which are lapped and matched, are not exposed to the line fluid; this confines corrosion and erosion to less critical areas. Sealing is further enhanced by a specially developed plug sealant charged evenly around the seating surfaces. Plugs are impregnated with a PTFE based anti-friction agent - 'SUPER LoMu' which provides greater wear resistance and ensures low consistent operating torque. SUPER LoMu also enhances resistance to seizure.

OPERATION

Short Pattern Lubricated Taper Plug Valves upto 10" are all supplied with square stems suitable for wrench operation (LW Series). Valves 6" to 10" can be offered with Light Duty Gear Units (LO Series). Valves 6" and above can be offered with Heavy Duty Worm Gear Unit (LG Series). Wrenches and Gear Units should be selected as determined by the service conditions, which influence the operating torque. However wrenches should be ordered separately whereas gear units as ordered are installed on the valves and supplied. Valves can also be offered with Carbon Steel Plug (LWS/LOS/LGS Series)

As a standard, Cast Iron Plug Valves are supplied with AUDCO 731 Plug sealant which is suitable for most services other than acid solutions and petroleum products. On request, plug sealant from a wide range offered, can be supplied to suit the nature of service. It is recommended that you consult us before selecting the plug sealant for a new service.

END CONNECTIONS

Valves can be offered with flanged ends to the following standards.

Flanged : To match flanges drilled to BS10 Table D and ANSI/ASME B16.1, Class 125.

Drilling to DIN 2532 PN 10 or BS 4504 PN 10 can be offered

Valves can also be offered with undrilled flanges.

Sizes 6" and above have some holes (refer table) tapped on each flange to facilitate fastening of the mating flanges and require studs of same diameter of the bolts which they replace. The tapping is to UNC threads of class 125 & BST 'D' flanges and ISO metric coarse for PN10 flanges.

MATERIAL SPECIFICATION

| Name of Part | Specification |
|--------------------------|--|
| Body Cover & Gland | Cast Iron IS 210 Gr. FG 220 |
| Plug | Cast Iron IS 210 Gr. FG 220 or Carbon steel ASTM A216 Gr. WCB |
| Bolting | Carbon Steel Studs : BS 970 220 M07 Hex. Screw : ANSI B18.2.1 Hex. Nut : ANSI B18.2.2 |
| Shim | Mild Steel, Nickel Plated |
| Gland Packing | Rubberised Asbestos |
| Gasket | Compressed Asbestos |

CATALOGUE NUMBER

A familiarity with our Catalogue number is not necessary when specifying our Valves.

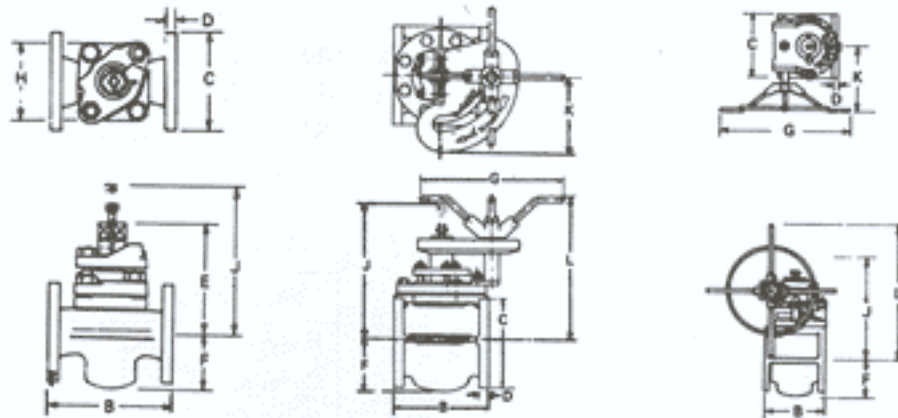
Provide the following details of the valves to our Distributor/Stockist:- Size, Type (Standard, Inverted), Line Fluid, Materials of construction (Body, Plug), Pressure Rating, End Connection, Type of Operation.



TECHNICAL DATA

| Catalogue No. | End Connection | Max C.W.P. | | Test Pressure (psig) | |
|----------------------------------|-------------------|------------|-----|----------------------|------|
| | | psig | bar | Body | Seat |
| LW11/LWS11/LO11/LOS11/LG11/LGS11 | Flanged BST 'D' | 100 | 7 | 225 | 165 |
| LW13/LWS13/LO13/LOS13/LG13/LGS13 | Flanged Class 125 | 200 | 14 | 300 | 220 |

Test Pressure for body and seat including duration of test conforms to BS 6755 Part I



DIMENSIONS (mm)

| Size | | 2" DN50 | 2.1/2" DN65 | 3" DN80 | 4" DN100 | 6" DN150 | 8" DN200 | 10" DN250 | 12" DN300 |
|--------------------------------|---------|------------|----------------|------------|-------------|-----------------------|-----------------------|-----------------------|-----------------------|
| Face to Face | B | 177.8 | 190.5 | 203.2 | 228.6 | 266.7 | 292.1 | 330.2 | 355.6 |
| Tapped Hole details per flange | BST 'D' | - | - | - | - | 2 x 5/8" 22mm deep | 4 x 5/8" 28mm deep | 4 x 3/4" 30mm deep | 8 x 3/4" 32mm deep |
| | CL.125 | - | - | - | - | 2 x 3/4" 22mm deep | 2 x 3/4" 28mm deep | 2 x 7/8" 30mm deep | 2 x 7/8" 32mm deep |
| Flange diameter | BST 'D' | 152.4 | 165.1 | 184.2 | 215.9 | 279.4* | 342.9* | 406.4* | 482.6* |
| | CL.125 | 152.4 | 177.8 | 190.5 | 228.6 | 279.4 | 342.9 | 406.4 | 482.6 |
| Flange thickness | D | 19.1 | 19.1 | 19.1 | 23.9 | 25.4 | 28.4 | 30.2 | 31.8 |
| C/L to top of plug | E | 156 | 173 | 202 | 227 | 292 | 327 | 364 | - |
| C/L to bottom of body | F | 71 | 87 | 102 | 114 | 175 | 179 | 219 | 289 |
| H/W diameter | G | - | - | - | - | 578 | 578 | 578 | 578 |
| Max. width | H | 105 | 125 | 145 | 152 | 279 | 343 | 381 | - |
| Clearance | LW/LO | 213 | 252 | 278 | 318 | 416 | 449 | 483 | - |
| | LG | - | - | - | - | - | 486 | 536 | 597 |
| C/L to Quadrant/ H/W face | LO | - | - | - | - | 229 | 229 | 229 | - |
| | LG | - | - | - | - | - | 308 | 308 | 308 |
| C/L to top of H/W | LO | - | - | - | - | 432 | 457 | 508 | - |
| | LG | - | - | - | - | - | 616 | 679 | 718 |
| Wrench No. | | 4H | 5H | 6H | 7H | 10H | 10H+ | 10H+ | - |
| Sealant stick size | | B | C | C | D | E | E | E | E |

* These valves have flanges integral with the body and Class 125 diameter.

+ Light duty gear unit is recommended for Valves sizes 8" & 10"

As we continuously endeavour to improve our products, the data given herein are subject to change.

Manufactured by



AUDCO INDIA LIMITED

B8, MMDA Industrial Area, Maraimalai Nagar 603 209
Phone : 04114-52323 Fax : +91-4114-52327

Administrative Office :

Post Bag 976, Chennai - 600 089.

Phone : 232 2323 Fax : +91 (44) 232 5055/9605

Marketed by



LARSEN & TOUBRO LIMITED

Industrial Valves Section

P.O. Box 619, Calcutta 700 001 - Ph : 2822301 - Fax : 33-2821025

Post Bag 5247, Chennai 600 002 - Ph : 8522141 - Fax : 44-8520769

P.O. Box 6223, New Delhi 110 015 - Ph : 5931302 - Fax : 11-5438624

P.O. Box 119, Pune 411 001 - Ph : 624447 - Fax : 212-624910

P.O. Box 8119, Bombay 400 051 - Ph : 6401232 - Fax : 22-6401312